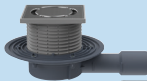




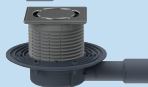
HL sorgt für den guten Ablauf  
www.hl.at



HL90Prblue 0,43 l/s, DN 40/50



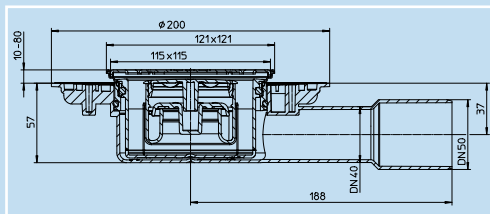
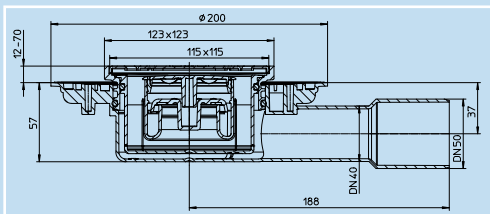
HL90Prblue-3000 0,43 l/s, DN 40/50



HL90Prblue



HL90Prblue-3000



**DE** BODENABLAUF  
**IT** SCARICO A PAVIMENTO  
**EN** FLOOR DRAIN

**TR** YER SÜZGEÇİ  
**CZ/SK** PODLAHOVÁ VPUST  
**HR** PODNI ODVOD

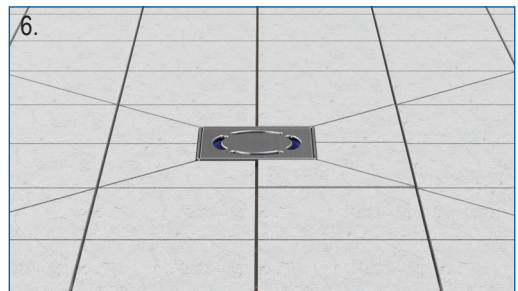
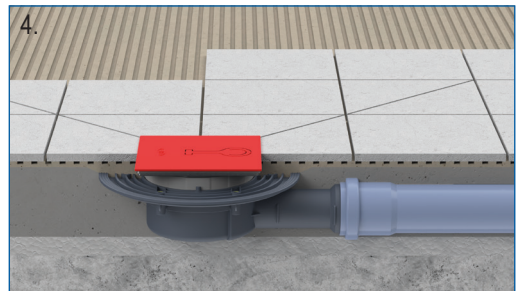
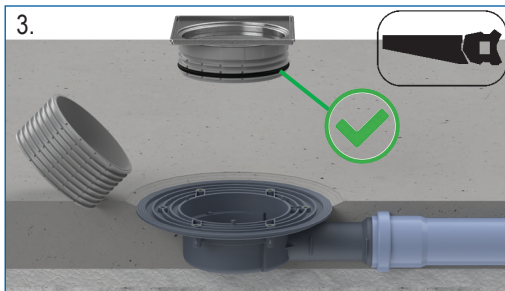
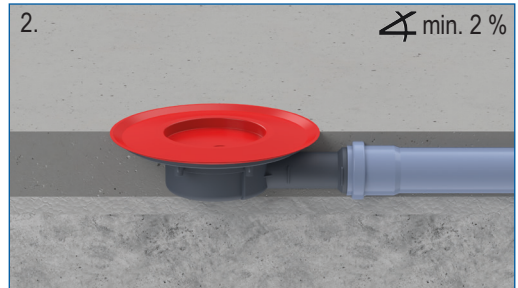
**HU** PADLÓLEFOLYÓ  
**PL** WPUST PODŁOGOWY  
**SI** TALNI ODTOK

**RO** SIFON DE PARDOSEALĂ  
**RU** ТРАП  
**BG** ПОДОВ СИФОН

HL HUTTERER + LECHNER GMBH  
BRAUHAUSGASSE 3 - 5  
A-2325 HIMBERG

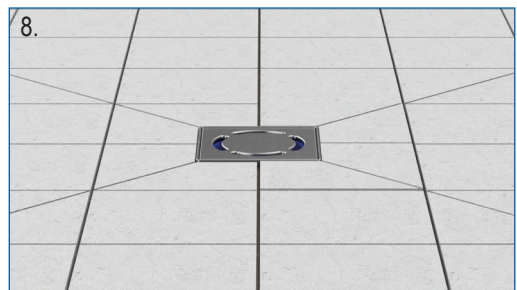
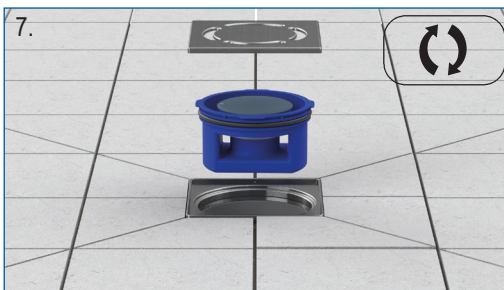
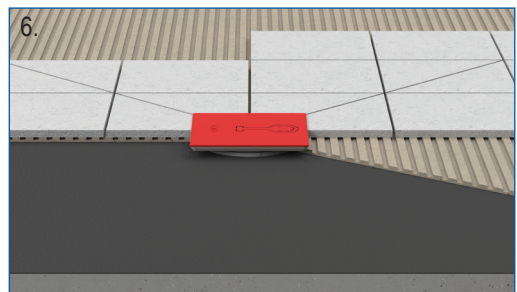
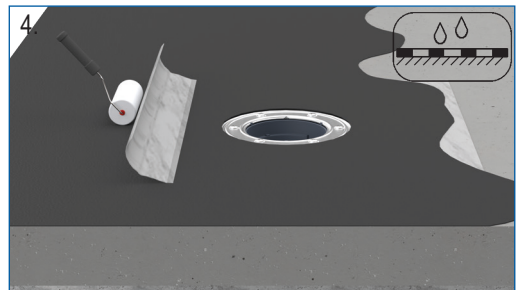
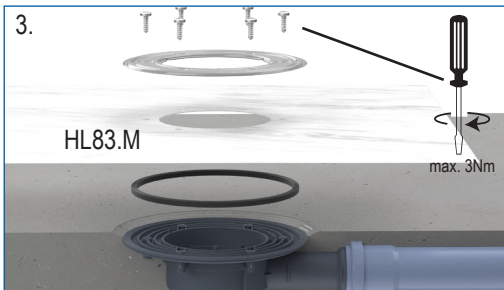
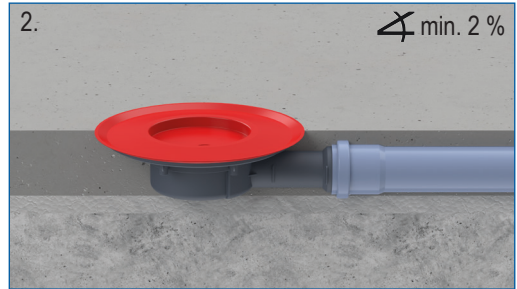
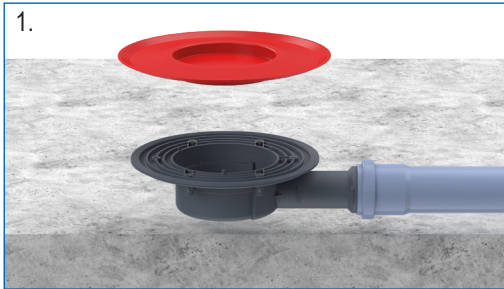
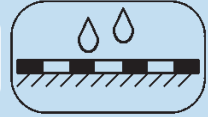
INTERNATIONAL SERVICE:  
E-MAIL: support@hl.at  
SERVICE HOTLINE: +43 2235 87748

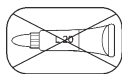
# Montage ohne Abdichtung/ Installation without sealing



# Montage mit Abdichtung Installation with sealing

Optional HL83.M



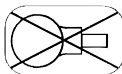


Nicht kleben  
Do not glue  
nem ragasztható

yarıştırılmaz  
несклеиваемый  
не се залепва

Nem ragasztható  
nelepit  
nie sklejać

ni za lepljenje  
non incollabile  
nije za lijepliti



Nicht schweißen  
Do not weld  
nem hegeszthető

kaunatılmaz  
nesvarivaemiy  
не се заварява

Nem hegeszthető  
nesvařovat  
nie zgrzewać

ni za varjenje  
non saldabile  
nije za varjenje



Temperaturbeständigkeit  
Resistente a temperature  
Temperature resistant

Isiya dayanıklılık  
Teplotní odolnosti  
Otporan na temperaturu

Hőállóság  
Odpornosc termiczna  
Temperaturna obstojnost

Rezistent la temperatură  
ne более  
темп. устойчивост



Bauschutz  
Coperchio di protezione  
Protective cover

Yapı Koruması  
Stavební zátka  
Zaštitni poklopac

Védőfedél  
Osłonia montazowo budowlana  
Vgradna zaščita

Sarac de protecție  
Монтажная заглушка  
Монтажен капак

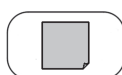


Schneiden  
Tagliare  
Cut

Kesin  
Řezat  
Sečenje

Vágható  
Ciąć  
Rezati

Täiere  
Пилить  
Рязане

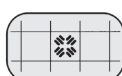


Folie abziehen  
Togliere pellicola  
Remove membrane

Folyeyi cikarın  
Fólii sejmout  
Skinuti foliju

Fóliázás  
Folię zdjąć  
Sneti folijo

Indepartare folie  
Снять защитную пленку  
Премахнете фолиото



Bodenablauf  
Scarico a pavimento  
Floor drain

Yer Süzgeci  
Podlahová vput  
Podni slivnik

Padlósízifon  
Wpust podłogowy  
Talni sifon

Sifon de pardoseală  
Тран  
Подов сифон

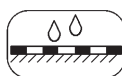


Reinigung  
Pulitura  
Cleaning

Temizlik  
Čištění  
Čišćenje

Tisztítás  
Oczyszcć  
Čišćenje

Curățare  
Очистить  
Почистване

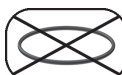


Isolierfähig  
Idoneo per impermeabilizzare  
Compatible with isolation

İzole edilebilir  
Kızılolvani  
Moguće izoliranje

Szigetelhető képesség  
Możliwość izolacji  
Izolacijska sposobnost

Compatibil cu hidroizolatie  
Гидроизоляция  
Възможност за изолиране



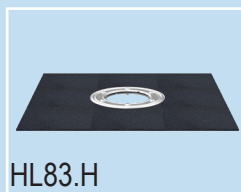
Dichtung nicht verwenden  
Non applicare il sigillante  
Don't use sealing

O-Halka contayı kullanmayınız  
Bez těsnění  
Ukloniti brtvu

Tömítést ne alkalmazza  
Nie zakładać uszczelki o-ring  
Tesnilno ne uporabiti

Nu utilizati O-ringul de etansare  
Не устанавливайте уплотнительное кольцо  
O-ринг не се поставя

## Zubehör/ Accessories



## Reinigung/ Cleaning

