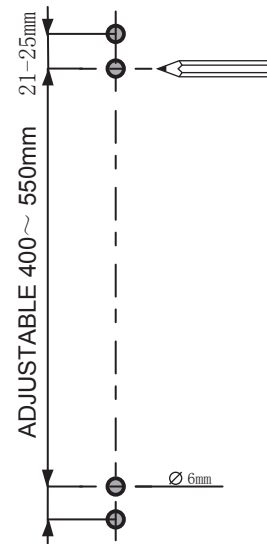


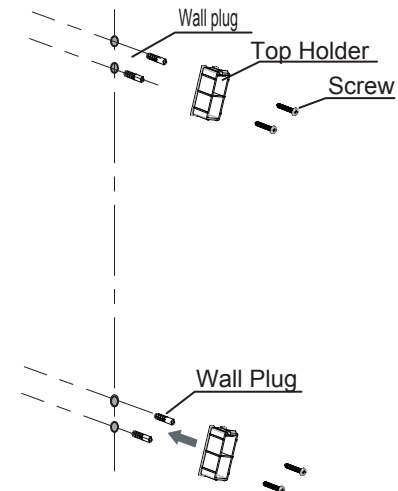
1

a) Measure and mark desired mounting positioning.

b) Drill mounting holes with 6mm drill bit.



2



a) Push both Wall Plugs into each 6mm hole

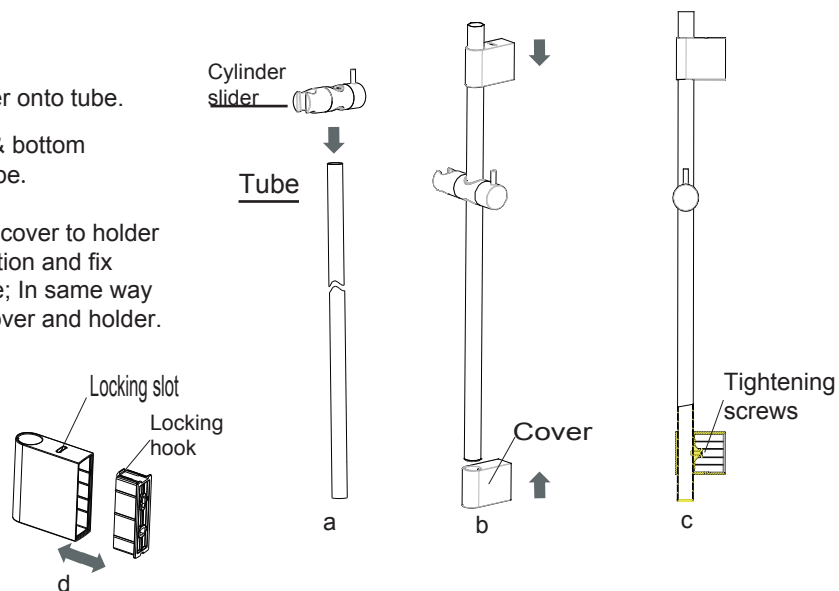
b) Place top & bottom holders over top Wall Plug and fix in position with screw provided.

3

a) Place slider onto tube.

b) Slide top & bottom holders to tube.

c) Align one cover to holder in same position and fix screw to tube; In same way to another cover and holder.



4

a).Be noted to keep top and bottom holders in alignment and same distance; then push assembled top & bottom cover with rail bar to the holders, and ensure the locking hook is locked into the locking slot.

b).Attach the top and bottom covers to the tube. Then finish assembly of all parts.

